

# VERSAFOAMER 4000

User Manual

**B&G**

## Safety Precautions

- Do not connect this unit to external air or gas source; use only with supplied compressor.
- Do not pressurize an empty tank.
- Open tank cap slowly to release air before removing.
- Do not transport the unit while tank is pressurized.
- Do not treat voids with electrical outlets or cables.
- Always use a grounded (3 terminal) extension cord.



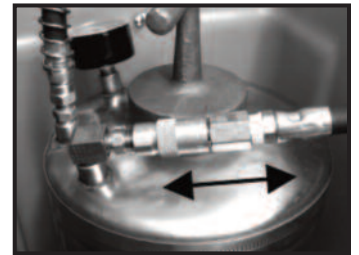
## Operation

### Foaming: Tank In Case

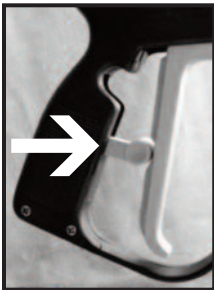
Use the 8-ft. hose to treat drains, wall voids, and other spaces with foam.

### Foaming: Tank Removed

Fully pressurize tank, then disconnect tank from compressor hose and remove tank from case; apply foam in short bursts to floor drains and other sites.



## Before Starting



- Secure all quick-connect hose connections.
- Engage lock on valve.
- Tighten tank cap until snug.

## Operating Instructions

### Mixing and Filling

- To ensure adequate air pressure in tank, add 3/4 to 1 gal. liquid to tank.
- Make sure switch on compressor is in the Off position, and unit is unplugged from wall connection.
- When mixing insecticides in the tank, use the gallon and liter marks on the side.
- Mix all insecticides according to label directions.

**NOTE:** Foaming agent must be added to tank to make foam.

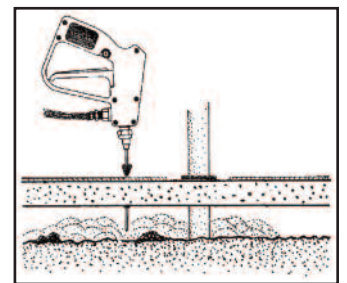
### Pressurizing the Tank

- Connect unit to 110V or 220V outlet with 3 terminal electric cord.
- Start compressor by depressing the on/off switch.
- Compressor maintains pressure in the tank, it will automatically cycle on and off during normal use, but will not over-pressurize.

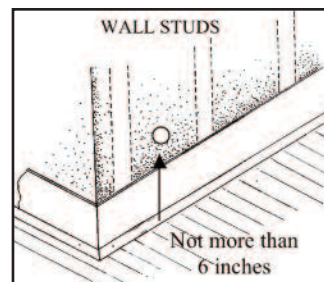
## Sub-Slab Application



Drill 9/16 " hole through concrete; insert **straight tip** (use stopper to prevent leaking) and apply foam to void; 5 min. of foaming delivers about 1 gal. liquid into soil the hole.

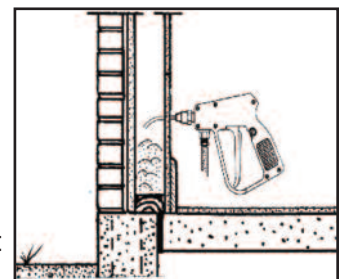


## Void-Space Application



Insert curved tip and rotate in an arc to deliver 7 one-second bursts (3.5 oz.) of foam to treat studs and sill plate below.

Drill 3/16 " hole between wall studs, 6 inches above base-board



95138414 Rev 05/24

## Care and Maintenance

- Flush tank, Gunjet valve, and hose with clean water regularly.
- Inspect hoses and hose connections for wear.
- Protect application tip when not in use.
- Store hose and valve in carry case when not in use.

## VERSAFOAMER 4000



#	Order #	Description
1	16200007	Compressor, 110V
	16200020	Compressor, 220V
2	16200002	Quick-connect
3	22067312	30-L Gunjet valve
4	22030220	Hose, 8 ft.
5	22026500	Gauge, pressure
6	16200013	Curved tip
7*	16200018	Straight tip
8*	16200023	Drain application tip

\* Optional or purchased separately

## Trouble Shooting

- Problem:** Tank not maintaining air pressure  
**Solution:**
  - Tighten tank cap
  - Check for gasket in tank cap, replace if missing
- 
- Problem:** Tank not getting air pressure  
**Solution:**
  - Inspect/engage hose on compressor and quick connection
- 
- Problem:** Applying only air not foam  
**Solution:**
  - Tank empty, add liquid insecticide
  - Siphon tube for foam port is plugged or damaged
- 
- Problem:** Foam not thick or like water  
**Solution:**
  - Increase amount of foaming agent in tank
  - Clean inside of hose from tank to 30-L Gunjet valve
- 
- Problem:** Foam delivery is uneven  
**Solution:**
  - Clean screen filter behind mozzle in the 30-L Gunjet valve
- 
- Problem:** Hose leaks at junction with tank  
**Solution:**
  - Replace Teflon washer, do not over-tighten washer when installing

